

Appropriate Containers for Flower Arrangements and Planters



1206—10" CACTUS PLANTER
(No Terra Cotta or Flame)
6.00



1205—7½" CACTUS VASE
(No Terra Cotta or Flame)
6.00



395—6" PLANTER W/SAUCER
Bottom Drain Hole
Will Hold 4" Container
10.00



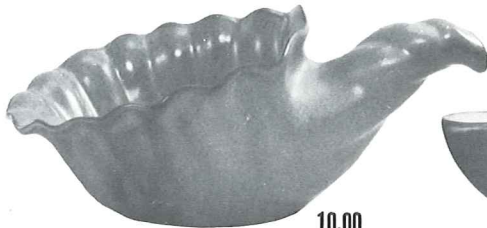
C-33—5" BOOT MUG
4.00



394—5" OWL PLANTER
5.00



6.50
70-B—5½" RINGED
JARDINIERE



10.00
222—12" CORNUCOPIA
(Not Available in Flame)



57—7" CORNUCOPIA
5.50



302—6" CANDLE VASE
4.75



71—10" LEAF HANDLED VASE
15.00



9.25
70-A—7" RINGED JARDINIERE



12.00
A10—10" JARDINIERE
Not Available in Flame



8.00
A8—8½" JARDINIERE
Not Available in Flame



6.00
A7—7" JARDINIERE



4.00
A6—6" JARDINIERE

HONEY JUGS — SYRUP PITCHERS — FLOWER CONTAINERS



803—HONEY JAR
W/LID 4.75



838—10 OZ. PITCHER
3.25



3.75
831—16 OZ. PITCHER



3.75
833—24 OZ. PITCHER



3.75
835—24 OZ. PITCHER



3.75
8—24 OZ. PITCHER

HONEY JUGS Not Available in Terra Cotta.

ASH TRAYS

(No Terra Cotta)



469—4½" SAFETY ASH TRAY
3.25



3.25
474—4" ROUND ASH TRAY



5.00
453—7" ARROWHEAD



5.00
458—7" THREE SIDED

Small containers perfect for miniature or dried arrangements.



5DB 3.25



BP 2.75



6B0 3.25



94B0 3.25



4Y 3.00



504 2.75



X0 1.50